



Police Chief ..... **Charles Craft**





---

---

## Functional Organizational Chart

### Administration

- Prepares and administers the department's budget
- Coordinates and administers grants
- Directs the planning, organization, coordination and review of department operations
- Establishes, evaluates and reports on department goals
- Conducts internal and pre-employment investigations
- Develops, implements and evaluates department policies and procedures
- Works with the city manager and department heads on City plans and projects
- Liaisons with law enforcement and community groups
- Manages Emergency Operations and Homeland Security functions

### Investigations Division

- Investigates reported crimes and suspected criminal activity
- Conducts undercover investigations and criminal surveillances
- Gathers, collates, and disseminates information regarding criminal activity
- Administers criminal and narcotics forfeiture actions
- Provides specialized narcotics trafficking, auto theft and arson investigation
- Liaisons with other law enforcement agencies
- Conducts investigations relative to child welfare
- Provides liaison services to the Troy School District
- Liaisons with local, state and federal prosecutors and courts



---

---

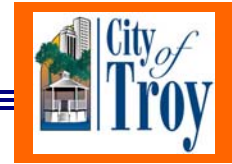
## Functional Organizational Chart, Continued

### Support Services Division

- Public Safety Answering Point-dispatches all calls for emergency service
- Develops, schedules and presents department training
- Maintains records, processes FOIA, permit and license requests
- Stores, secures and disposes of all property
- Houses and transports prisoners
- Coordinates and maintains management information systems, conducts research/planning
- Implements crime prevention programs
- Facilitates problem solving projects
- Disseminates media information

### Patrol Division

- Establishes working relationships with people in the community to facilitate quality policing and problem solving
- Operates motor, foot and bicycle patrol by uniformed and plain clothes officers for the general maintenance of law and order
- Provides immediate response to emergency situations and provides specialized law enforcement response to tactical situations
- Conducts preliminary investigation of crimes, enforcement of local ordinances, state law and any other law applicable and in force within the city
- Traffic law enforcement, investigation of traffic crashes, traffic education programs, respond to complaints of neighborhood traffic problems and coordination of school crossing guards
- Manages impounded vehicles
- Provides for control and care of animals

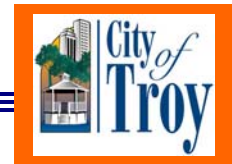


**Department at a Glance**

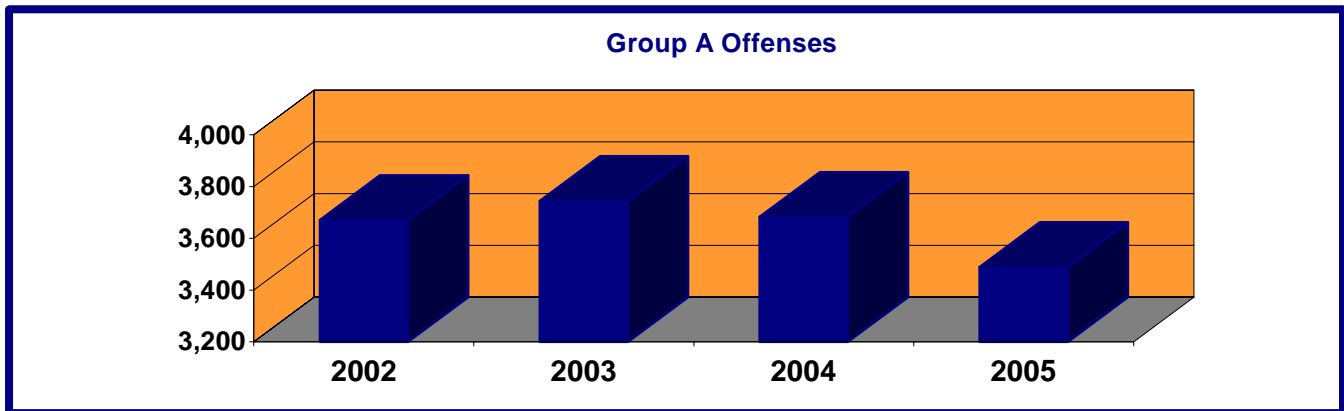
<b>Funding Level Summary</b>	<b>2003/04 Actual</b>	<b>2004/05 Actual</b>	<b>Estimated 2005/06 Budget</b>	<b>2005/06 Budget</b>	<b>2006/07 Budget</b>	<b>% of Change</b>
Administration	\$1,486,731	\$1,596,551	\$1,548,710	\$1,540,880	\$1,680,400	9.1%
Investigations	3,328,020	3,347,102	3,234,810	3,477,830	3,652,500	5.0
Patrol	10,537,502	11,119,012	11,313,480	11,898,980	12,028,810	1.1
Support Services	5,190,860	5,129,645	5,365,210	5,700,920	5,812,690	2.0
<b>Total Department</b>	<b>\$20,543,113</b>	<b>\$21,192,310</b>	<b>\$21,462,210</b>	<b>\$22,618,610</b>	<b>\$23,174,400</b>	<b>2.5%</b>

Personal Services	\$17,409,757	\$17,951,989	\$18,045,930	\$19,132,980	\$19,577,030	2.3%
Supplies	389,588	386,638	430,970	462,540	454,960	-1.6
Other Services/Charges	2,673,241	2,782,907	2,985,310	3,023,090	3,142,410	3.9
Capital Outlay	70,527	70,776	0	0	0	0
<b>Total Department</b>	<b>\$20,543,113</b>	<b>\$21,192,310</b>	<b>\$21,462,210</b>	<b>\$22,618,610</b>	<b>\$23,174,400</b>	<b>2.5%</b>

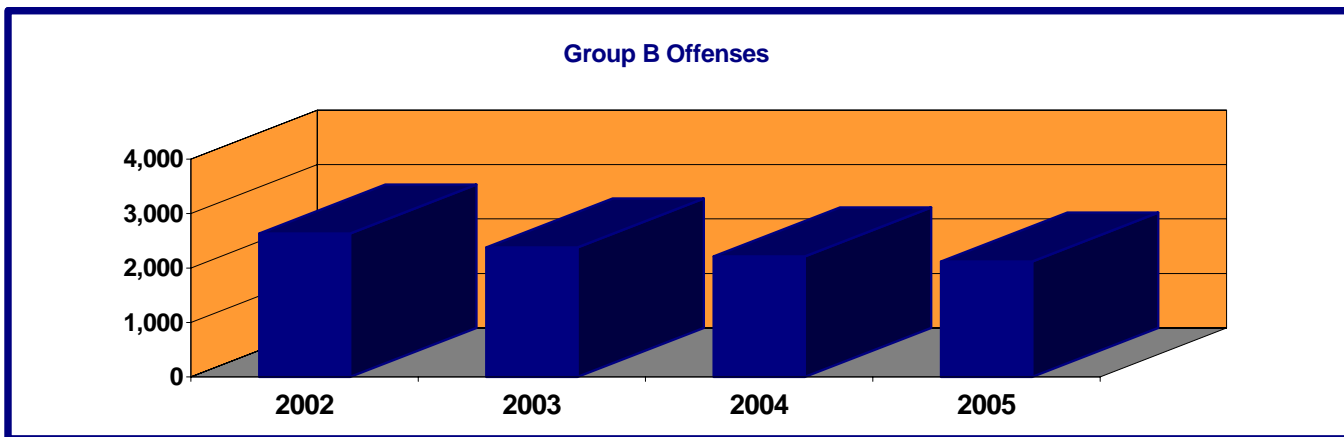
<b>Personnel Summary</b>	<b>2002/03</b>		<b>2003/04</b>		<b>2004/05</b>		<b>2005/06</b>	
	<b>Full-Time</b>	<b>Part-Time</b>	<b>Full-Time</b>	<b>Part-Time</b>	<b>Full-Time</b>	<b>Part-Time</b>	<b>Full-Time</b>	<b>Part-Time</b>
Police Department	194	13	194	13	194	13	193	14
<b>Total Department</b>	<b>194</b>	<b>13</b>	<b>194</b>	<b>13</b>	<b>194</b>	<b>13</b>	<b>193</b>	<b>14</b>



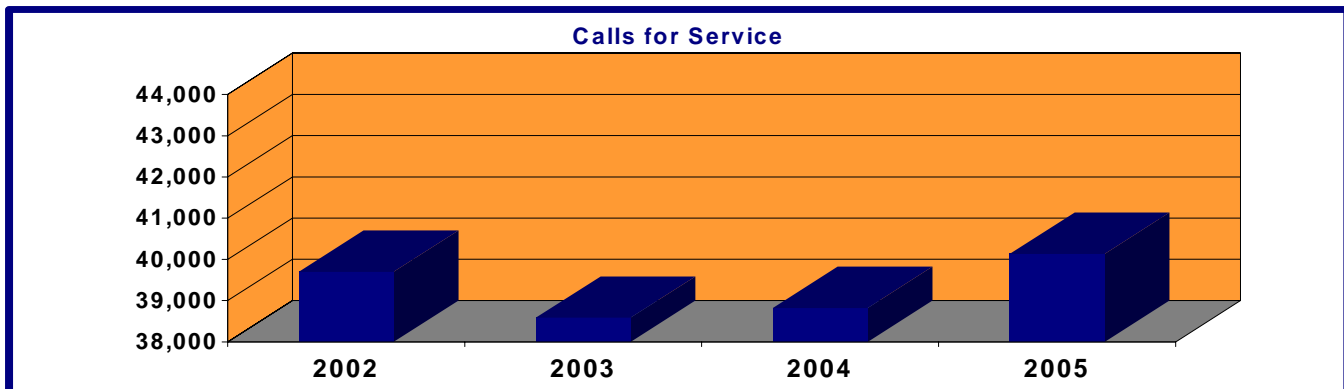
## Key Departmental Trends



By National Incident Based Reporting System (NIBRS) definition, there are 22 Group A crime categories. The number of reported incidents has declined to the lowest rate in history.



By NIBRS definition, there are 11 Group B Crime categories. The number of reported incidents has declined to the lowest rate in history.



While criminal offenses continue in a downward trend, non-criminal events show an upward trend over the last 3 years.



---

---

## Mission and Service Statements

### Mission Statement

**It is the mission of the Police Department to enhance the quality of life in our community by protecting life and property, and maintaining the peace through police service. The Police Department seeks to accomplish its mission by forming partnerships with residents, businesses, community groups, governmental agencies, and private organizations. The Department utilizes problem solving and creativity to enhance community livability and empowers its employees to exercise leadership to achieve our mission.**

### Service Statement

The Police Department recognizes that the citizens of Troy desire a safe, livable community, and that police personnel are often the government representatives best positioned to identify and address the problems and concerns that negatively impact the community's citizens. We believe that providing police personnel with the opportunity to partner with the community, and allowing them to participate in planning, decision-making, as well as service delivery, will result in a safer community with citizens who have an enhanced quality of life.

The Police Department's operating philosophy is a problem solving approach that encourages personnel to partner with those impacted by the problem. Emphasis is placed on the identification and resolution of the underlying cause of the problem. Employees are encouraged to utilize their knowledge of the community and their profession to identify public safety problems and quality of life issues. Employees drive the problem solving process and are responsible and accountable for their individual actions. This philosophy is results oriented, and focuses on resolving the problem's underlying causes.

State statute, city code and the citizens, through the Troy City Council, establish the authority by which the Police Department operates. Troy City Code mandates a Department of Police, headed by a Chief of Police. The Chief is charged with directing the police work of the City and is responsible for the enforcement of law and order. Troy police officers have all the powers, duties and responsibilities conferred upon them by virtue of the ordinances of the City of Troy and the law. The Police Department shall have other additional powers, duties and responsibilities as lawfully imposed by any administrative directive, resolution, rule, ordinance, charter provision, or law.

### Did You Know ...?

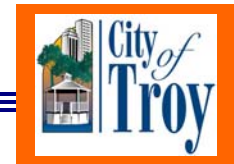
- The Police Department assumed dispatch, lock-up, and animal control responsibilities for the City of Clawson and thereby increased City of Troy revenues in 2005.
- The Police Department received 31,258 emergency calls in 2005; over 60% of them were from wireless phones.
- Troy was ranked the 6<sup>th</sup> safest city in the nation with population over 75,000 by the Morgan Quitno Press.



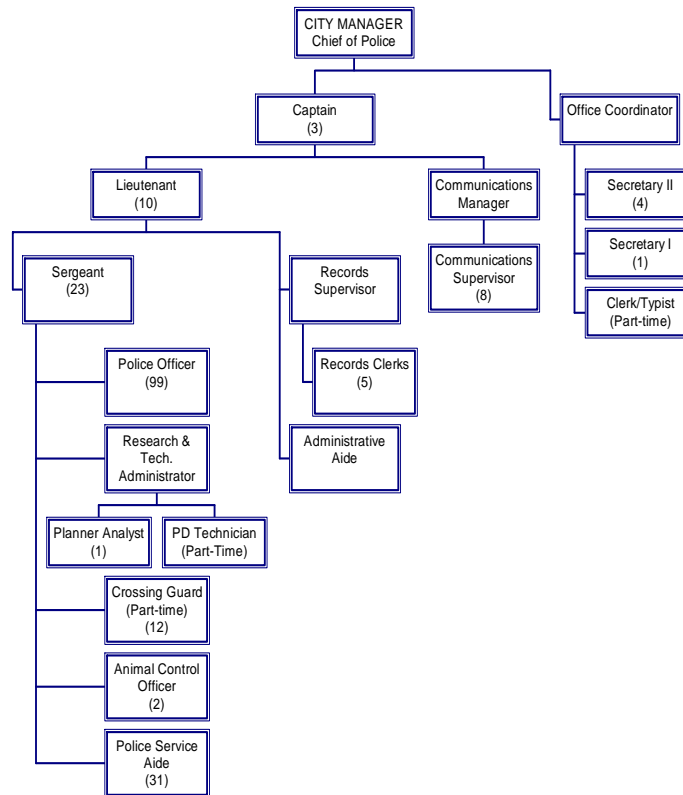
## Performance Objectives

- Reduce the number of intoxicated drivers and alcohol related offenses occurring in Troy (Objective 6)
- Reduce the number of traffic crashes occurring in Troy (Objective 6)
- Establish a professional/career development program (Objective 1, 3, 4)
- Provide a public perception of safety and security (Objectives 3, 6)

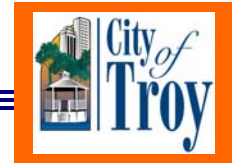
<b>Performance Indicators</b>		<b>2004/05 Actual</b>	<b>2005/06 Projected</b>	<b>2005/06 Budget</b>	<b>2006/07 Budget</b>
<b>Output</b>	OWI Arrests	519	470	500	475
	Hours dedicated to OWI enforcement	2,175	2,700	2,200	3,000
	Underage Alcohol enforcement	124	60	100	60
	Number of liquor compliance inspections	642	700	625	700
	Number of liquor law violations (LCC Violations)	12	10	10	12
	Number of alcohol abuse presentations	124	110	115	115
	Number of directed/selective traffic enforcement details	145	120	130	145
	Number of hazardous traffic citations issued	11,214	12,900	12,000	12,500
	In-service professional development training classes attended	0	0	0	30
	Number of Crime Prevention presentations	294	350	300	350
	Number of electronic citizen/business communications	30	52	40	52
	Number of cases assigned to investigators	1,307	1,242	1,200	1,275
	Number of Group A crime arrests	1,173	1,020	1,100	1,075
	<b>Efficiency</b>	Number of traffic crashes	3,411	3,500	3,400
Percent of traffic crashes involving alcohol		2.2%	2.0%	2.0%	1.9%
% of alcohol compliance inspections resulting in violations		2.1%	2.1%	2.0%	2.1%
Officers involved in professional/career development program		0	0	0	0
% of assigned cases resulting in warrant issuance		40.8%	37.8%	35.0%	39.0%
Group A Crime clearance rate		30.4%	30.0%	30.0%	30.0%
Number of Group A crimes occurring	3,515	3,300	3,400	3,300	



## Organizational Chart



Staff Summary	Approved 2004/05	Approved 2005/06	Recommended 2006/07
Chief of Police	1	1	1
Captain	3	3	3
Administrative Aide	1	1	1
Analyst Planner	0	0	1
Animal Control Officer	3	3	2
Clerk/Intern (Part-Time)	1	1	1
Communications Manager	1	1	1
Communications Supervisor	8	8	8
Crossing Guard (Part-Time)	12	12	12
Lieutenant	10	10	10
Office Assistant I & II	4	4	0
Office Coordinator	1	1	1
Police Dept. Technician (Part-Time)	0	0	1
Police Officer	100	100	99
Police Records Supervisor	1	1	1
Police Service Aide	31	31	31
Records Clerk	5	5	5
Research and Tech. Administrator	1	1	1
Secretary II	0	0	4
Secretary	1	1	1
Sergeant	23	23	23
<b>Total Department</b>	<b>207</b>	<b>207</b>	<b>207</b>



## Summary of Budget Changes

### Significant Notes - 2006/07 Budget Compared To 2005/06 Budget

The Police Department's operating budget for the fiscal year 2006/07 increased 2.5% or \$555,790 over the fiscal year 2005/06 budget. Almost 80% or \$444,050 of this increase is due to wage and benefit cost increases.

The Personal Services account makes up 85% of the Police Department's budget. Overall, the Personal Services budget increased 2.3% over last year. This increase reflects labor contract mandated 3% wage increases.

The cost of Supplies decreased by 1.6 percent, or \$7,580.

The cost of physical exams decreased by 66.0 percent or \$53,420. Physical exams are administered in alternating years to police officers and command officers. This year's expense reflects the cost of providing physical exams to command officers. Medical First Responder cost increased by 3.0 percent, or \$14,810, and is mandated by the contract with the service provider.

### 8-Year Operating Budget History

