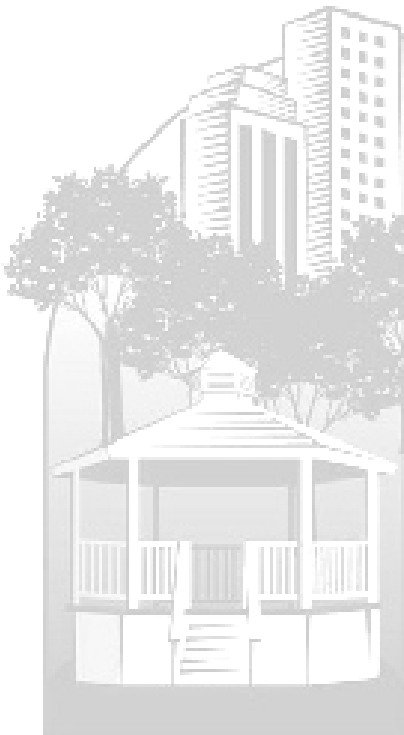


**POLICE CHIEF:**

Charles Craft

**Deputy Police Chief:**

Gary Mayer



City of  
Troy



## FUNCTIONAL ORGANIZATIONAL CHART

### Administration

- Prepares and administers the department budget
- Coordinates and administers grants
- Directs the planning; organization; coordination; and review of department operations
- Establishes; evaluates; and reports on department goals
- Conducts internal and pre-employment investigations
- Develops; implements; and evaluates department policies and procedures
- Works with the city manager and department heads on City plans and projects
- Serves as liaison with law enforcement and community groups
- Manages emergency operations and homeland security functions

### Investigations Division

- Investigates reported crimes and suspected criminal activity
- Conducts undercover investigations and criminal surveillances
- Gathers; collates; and disseminates information regarding criminal activity
- Administers criminal and narcotics forfeiture actions
- Provides specialized narcotics trafficking; auto theft; and arson investigation
- Serves as liaison with other law enforcement agencies
- Conducts investigations relative to child welfare
- Provides liaison services to the Troy School District
- Serves as liaison with local; State; and Federal prosecutors and courts

### Patrol Division

- Establishes working relationships with people in the community to facilitate quality policing and problem solving
- Operates motor; foot; and bicycle patrol by uniformed and plain clothes officers for the general maintenance of law and order
- Provides immediate response to emergency situations and provides specialized law enforcement response to tactical situations
- Conducts preliminary investigation of crimes; enforcement of local ordinances; State law; and any other law applicable and in force within the City
- Conducts traffic law enforcement; investigation of traffic crashes; traffic education programs; responds to complaints of neighborhood traffic problems; and coordination of school crossing guards
- Manages impounded vehicles
- Provides for control and care of animals

### Support Services Division

- Dispatches calls for emergency service
- Develops; schedules; and presents department training
- Maintains records; processes FOIA requests; and permit and license requests
- Stores; secures; and disposes of all property
- Houses and transports prisoners
- Coordinates and maintains management information systems and conducts research and planning
- Implements crime prevention programs
- Facilitates problem solving projects
- Disseminates media information

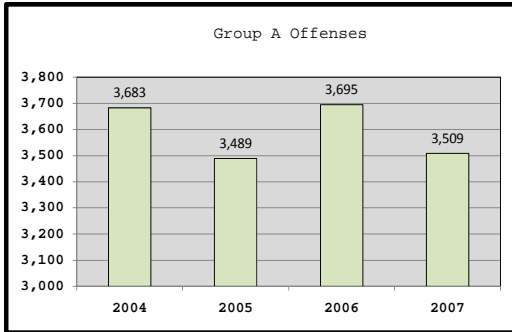


**DEPARTMENT AT A GLANCE**

Funding		Estimated				
Level	2005/06	2006/07	2007/08	2007/08	2008/09	% Of
Summary	Actual	Actual	Budget	Budget	Budget	Change
Administration	\$1,642,565	\$1,685,852	\$1,902,010	\$1,884,600	\$1,967,380	4.4%
Investigations	3,400,593	3,862,920	3,937,690	3,841,500	4,091,270	6.5%
Patrol	11,409,968	11,725,262	12,035,710	12,263,430	12,676,200	3.4%
Support Services	5,492,306	5,873,933	6,136,420	6,070,980	6,285,260	3.5%
<b>Total Department</b>	<b>\$21,945,432</b>	<b>\$23,147,967</b>	<b>\$24,011,830</b>	<b>\$24,060,510</b>	<b>\$25,020,110</b>	<b>4.0%</b>
Personal Services	\$18,604,737	\$19,699,782	\$20,258,820	\$20,385,590	\$21,453,190	5.2%
Supplies	377,696	403,387	537,140	477,410	479,870	0.5%
Other Services/ Charges	2,962,999	3,044,798	3,215,870	3,197,510	3,087,050	-3.5%
<b>Total Department</b>	<b>\$21,945,432</b>	<b>\$23,147,967</b>	<b>\$24,011,830</b>	<b>\$24,060,510</b>	<b>\$25,020,110</b>	<b>4.0%</b>

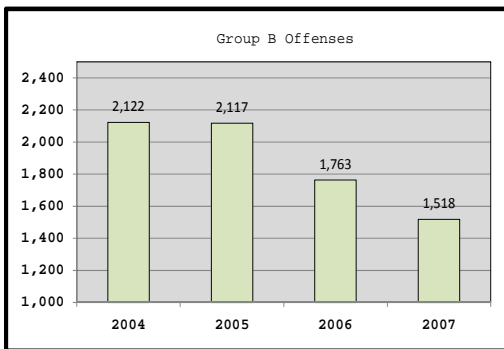
Personnel								
Summary	2005/06		2006/07		2007/08		2008/09	
	Full-Time	Part-Time	Full-Time	Part-Time	Full-Time	Part-Time	Full-Time	Part-Time
Police Department	194	13	193	14	192	18	192	18
<b>Total Department</b>	<b>194</b>	<b>13</b>	<b>193</b>	<b>14</b>	<b>192</b>	<b>18</b>	<b>192</b>	<b>18</b>

**KEY DEPARTMENTAL TRENDS**



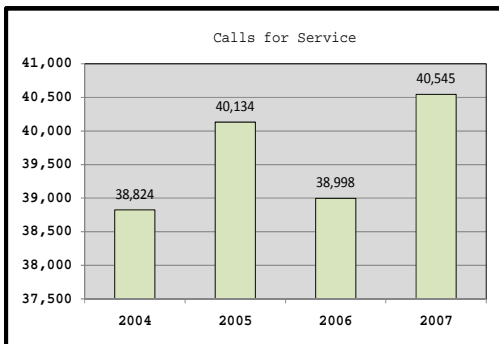
By National Incident Based Reporting Systems (NIBRS) definition, there are 22 Group A crime categories. 2007 decreased 5% compared to 2006.

---



By NIBRS definition, there are 11 Group B crime categories. The number of reported incidents has declined to the lowest rate in history.

---



Non-criminal events were up 4% compared to 2006.

---



## MISSION AND SERVICE STATEMENTS

### Mission Statement

It is the mission of the Police Department to enhance the quality of life in our community by protecting life and property, and maintaining the peace through police service. The Police Department seeks to accomplish its mission by forming partnerships with residents; businesses; community groups; governmental agencies; and private organizations. The Department utilizes problem solving and creativity to enhance community livability and empowers its employees to exercise leadership to achieve our mission.

### Service Statement

The Police Department recognizes that citizens of Troy desire a safe, livable community, and police personnel are often the best community representatives to identify and address the problems and concerns that negatively impact citizens. We believe that providing police personnel with the opportunity to partner with the community, and allowing them to participate in planning; decision-making; as well as service delivery; will result in a safer community with citizens who have an enhanced quality of life.

The Police Department's operating philosophy is a problem solving approach that encourages personnel to partner with those impacted by the problem. Emphasis is placed on identification and resolution of the underlying cause of the problem.

Employees are encouraged to utilize their knowledge of the community and their profession to identify public safety problems and quality of life issues.

Operational authority for the Police Department is established through State statute, City Code and City Council. The Troy City Code mandates a Department of Police, headed by a Chief of Police. The Chief is charged with directing the police work of the City and is responsible for the enforcement of law and order. Troy police officers have the powers; duties; and responsibilities conferred upon them by virtue of the ordinances of the City of Troy and the law. The Police Department shall have other additional powers; duties; and responsibilities as lawfully imposed by administrative directive; resolution; rule; ordinance; charter provision; or law.

### Did You Know?

The Police Department received 34,872 emergency calls in 2007. They also answered 157,278 administrative calls. Per day that averages 95 emergency calls and 430 administrative calls.

Police Lockup processed a total of 2,755 prisoners.

The Juvenile Unit was created in 1977 and the incentive for this unit came from local community youth agencies.

**PERFORMANCE OBJECTIVES**
**Objectives**

- Reduce the number of intoxicated drivers and alcohol-related offenses occurring in Troy (**Objective 6**)
- Reduce the number of traffic crashes occurring in Troy (**Objective 6**)
- Establish a professional/career development program (**Objective 1, 3, 4**)

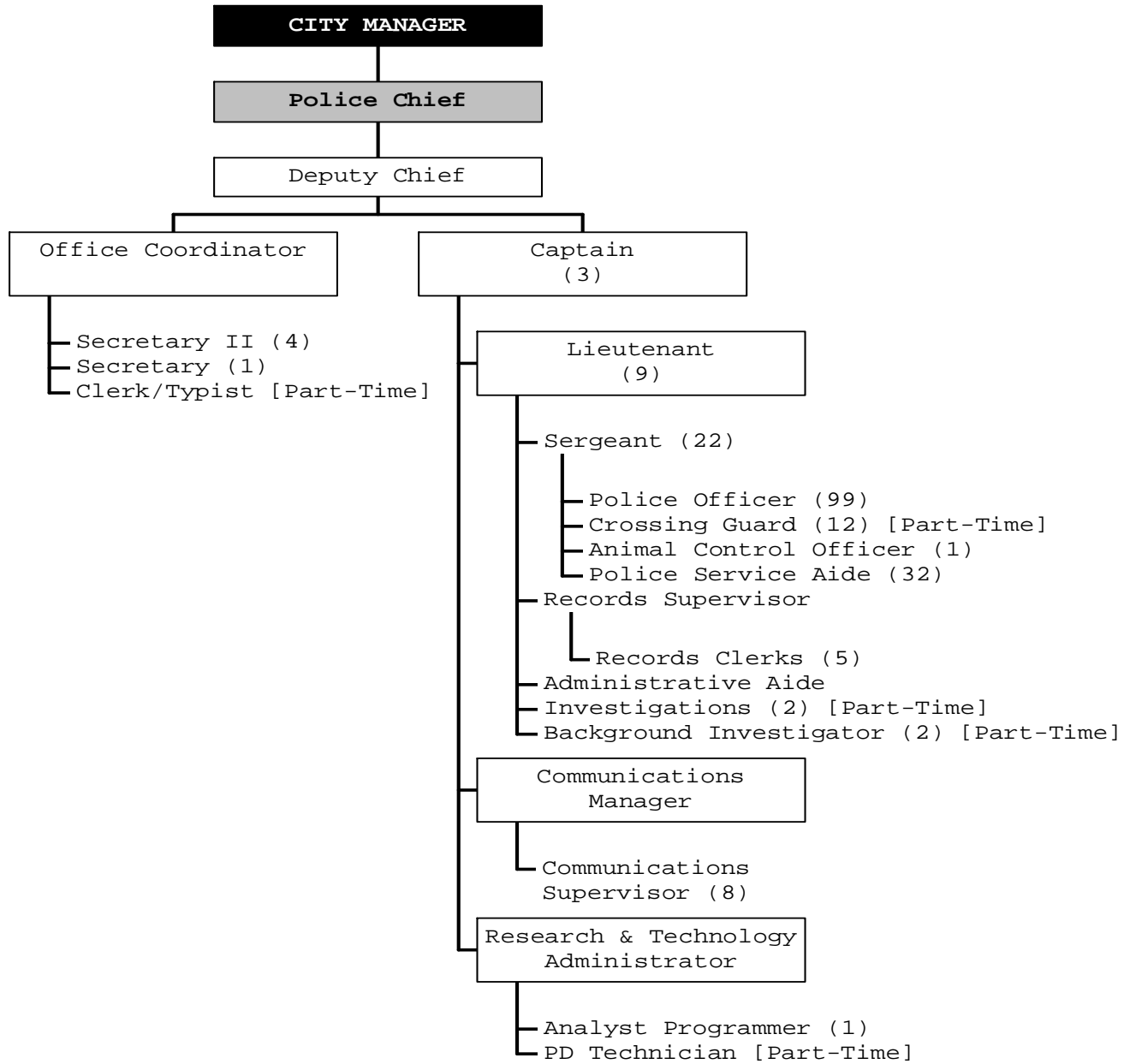
\*See the list of objectives established by City Council in the **CITY-WIDE ACTION PLAN** on pages 16 and 17.

Performance	2006/07	2007/08	2007/08	2008/09	
Indicators	Actual	Projected	Budget	Budget	
Output	• OWI Arrests	494	525	460	500
	• Underage Alcohol Enforcement	194	160	120	140
	• Liquor Compliance Inspections	776	760	700	750
	• Liquor Law Violations	5	25	6	10
	• Alcohol Abuse Presentations	94	80	125	80
	• Directed/Selective Traffic Enforcement Details	120	140	130	125
	• Hazardous Traffic Citations	9,455	8,830	9,000	8,500
	• In-service Professional Development Training Classes Attended	0	12	30	12
	• Crime Prevention Presentations	374	300	375	300
	• Electronic Citizen/Business Communications	52	52	52	52
	• Cases Assigned to Investigators	2,412	2,518	1,600	2,000
	• Group A Crime Arrests	1,281	1,325	1,350	1,350

**PERFORMANCE OBJECTIVES, CONTINUED**

Performance		2006/07	2007/08	2007/08	2008/09
Indicators		Actual	Projected	Budget	Budget
<b>Efficiency</b>	● Traffic Crashes	3,182	3,375	3,250	3,200
	● Percentage of Traffic Crashes Involving Alcohol	2.1%	2.5%	1.5%	1.5%
	● Alcohol Compliance Inspections Resulting in Violations	.9%	10.0%	1.0%	5.0%
	● Officers Involved in Professional/Career Development Program	0	11	5	5
	● Assigned Cases Resulting in Warrants	27.2%	30.8%	40.0%	35.0%
	● Group A Crime Clearance Rate	30.4%	28.0%	30.0%	30.0%
	● Number of Group A Crimes Occurring	3,751	4,010	3,800	3,800

ORGANIZATIONAL CHART





ORGANIZATIONAL CHART, CONTINUED

Staff	Approved	Approved	Recommended
Summary	2006/07	2007/08	2008/09
Chief of Police	1	1	1
Deputy Chief	0	1	1
Captain	3	3	3
Administrative Aide	1	1	1
Analyst Programmer	1	1	1
Animal Control Officer	2	1	1
Background Investigator [Part-Time]	0	2	2
Clerk/Intern [Part-Time]	1	1	1
Communications Manager	1	1	1
Communications Supervisor	8	8	8
Crossing Guard [Part-Time]	12	12	12
Investigations [Part-Time]	0	2	2
Lieutenant	10	9	9
Office Coordinator	1	1	1
Police Dept. Technician [Part-Time]	0	1	1
Police Officer	99	99	99
Police Records Supervisor	1	1	1
Police Service Aide	31	32	32
Records Clerk	5	5	5
Research and Tech. Administrator	1	1	1
Secretary II	4	4	4
Secretary	1	1	1
Sergeant	23	22	22
<b>Total Department</b>	<b>207</b>	<b>210</b>	<b>210</b>

**SUMMARY OF BUDGET CHANGES**

**Significant Notes - 2008/09 Budget Compared To 2007/08 Budget**

The operating budget increased by 4.0% due to a 5.2% (\$1,067,600) increase in overall Personal Services expenditures.

Other Services/Charges decreased by \$110,460 or 3.5% as a result of the elimination of nine vehicles from the fleet; administering department mandated physicals to command officers only; and eliminating contracted skunk removal services. Additionally, all pass-through expenditures (Troy Community Coalition; HAVEN; Common Ground; Troy Youth Assistance; and Troy Boys and Girls Club) were reduced by 3%.

**Operating Budget History**

