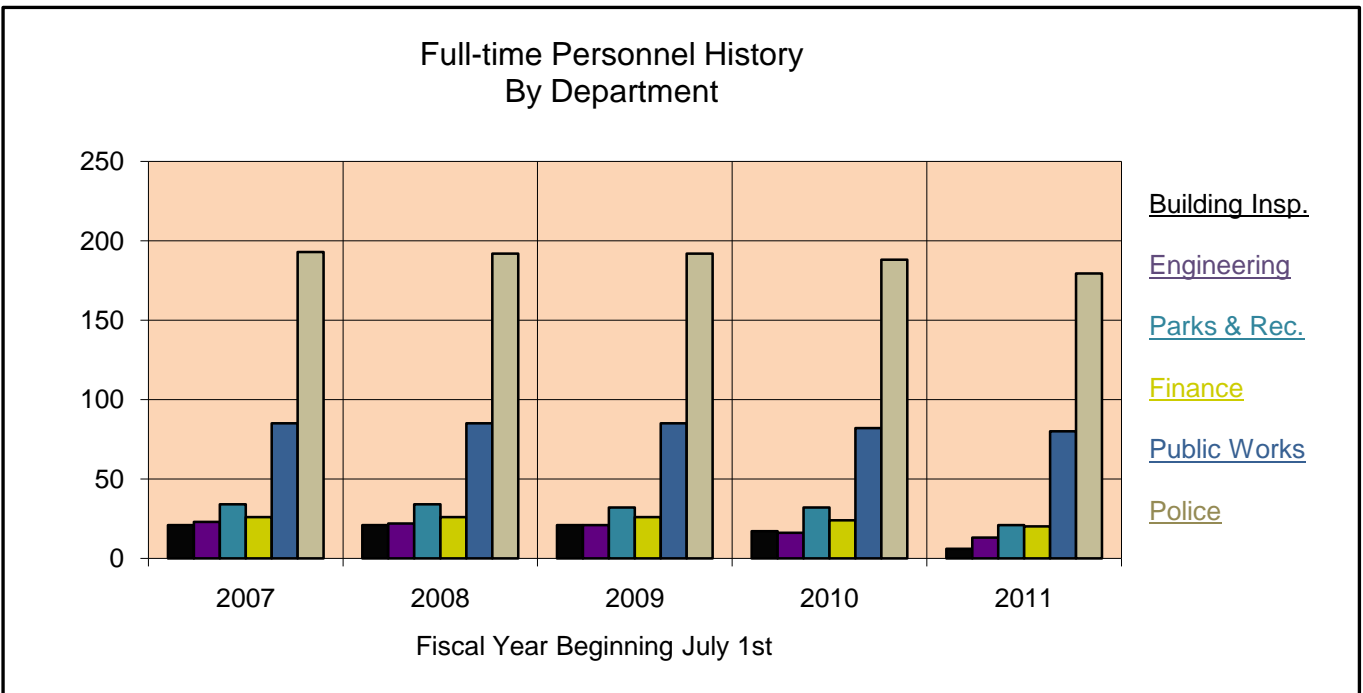
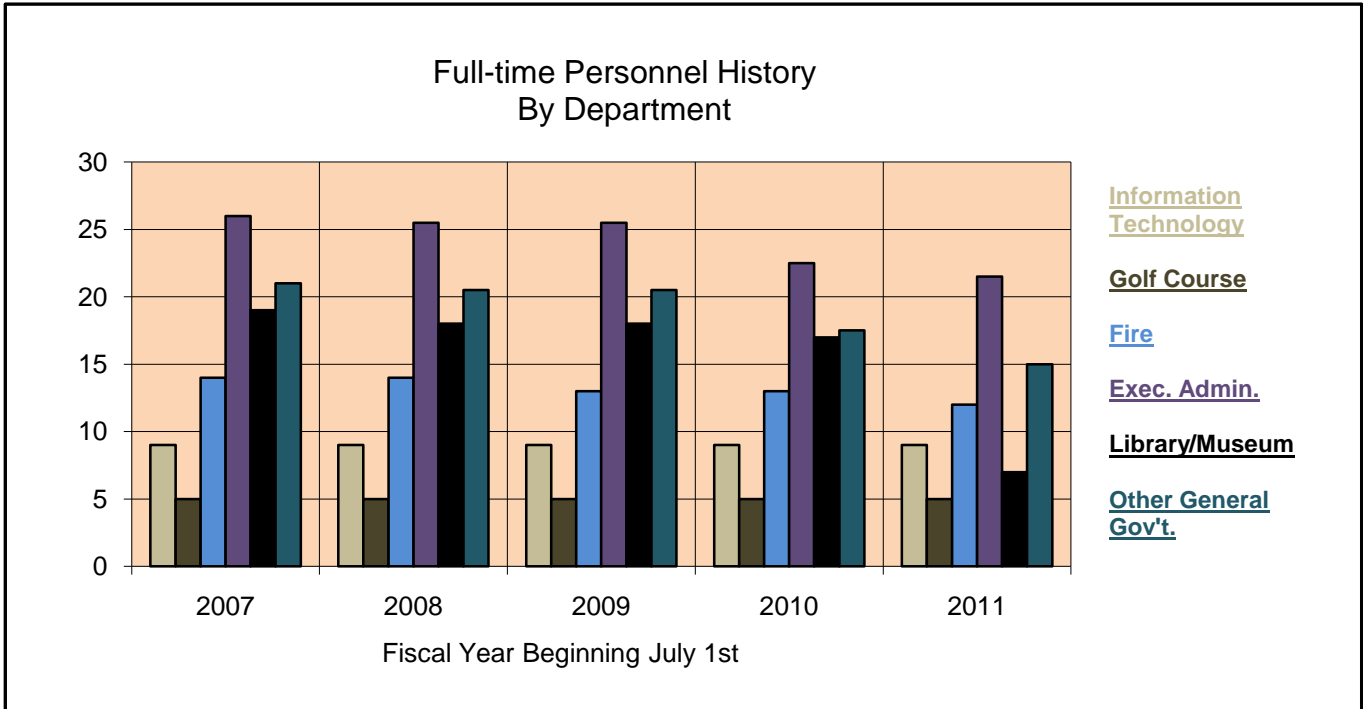


The graphs pictured below show the number of full-time employees by department for the past 5 years.





2010/11  
Budget

PERSONNEL SUMMARY

EXECUTIVE ADMINISTRATION

Positions	Approved 2007/08		Approved 2008/09		Approved 2009/10		Requested 2010/11	
	Full-Time	Part-Time	Full-Time	Part-Time	Full-Time	Part-Time	Full-Time	Part-Time
<b>• City Manager's Office</b>								
City Manager	1		1		1		1	
Assistant City Manager/ Finance & Administration	1		1		1		1	
Assistant City Manager/ Economic Development Services	0.5		0.5		0.5		1	
Administrative Aide	1		1		1		1	
Administration Assistant to the City Manager	1		1		1		1	
Cable Production Specialist								1
Camera Operators								2
Community Affairs Director							0.5	
Economic Development Specialist							1	
Intern								1
<b>Total - City Manager's Office</b>	<b>4.5</b>		<b>4.5</b>		<b>4.5</b>		<b>6.5</b>	<b>4</b>

<b>• City Attorney's Office</b>								
City Attorney	1		1		1		1	
Assistant City Attorney	1		1		1		1	
Attorney II	3		3		3		2	1
Clerk/Typist		1		1		1		
Legal Assistant	1		1		1		1	
Legal Assistant II	1		1		1		1	
Legal Secretary	1		1		1		1	
<b>Total - City Attorney's Office</b>	<b>8</b>	<b>1</b>	<b>8</b>	<b>1</b>	<b>8</b>	<b>1</b>	<b>7</b>	<b>1</b>



EXECUTIVE ADMINISTRATION, CONTINUED

Positions	Approved 2007/08		Approved 2008/09		Approved 2009/10		Requested 2010/11	
	Full-Time	Part-Time	Full-Time	Part-Time	Full-Time	Part-Time	Full-Time	Part-Time
<b>• City Clerk's Office</b>								
City Clerk	1		1		1		1	
Deputy City Clerk	1		1		1		1	
Administrative Aide	1		1		1		1	
Clerk/Typist – Elections		1		1		1		1
Clerk/Typist – Clerk's Office		1		1		1		1
Office Assistant I	2		2		1		1	
Office Assistant II	1		1		1		1	
<b>Total - City Clerk's Office</b>	<b>6</b>	<b>2</b>	<b>6</b>	<b>2</b>	<b>5</b>	<b>2</b>	<b>5</b>	<b>2</b>
<b>• Community Affairs</b>								
Community Affairs Director	1		1		1		0	
Cable Production Assistant		1		1		1		0
Camera Operator		3		3		3		0
Community Affairs Assistant		2		2		2		0
Community Affairs Officer	2		2		0		0	
<b>Total - Community Affairs</b>	<b>3</b>	<b>6</b>	<b>3</b>	<b>6</b>	<b>1</b>	<b>6</b>	<b>0</b>	<b>0</b>
<b>• Human Resources</b>								
Human Resources Director	1		1		1		1	
Human Resources Specialist	2		2		2		1	
Office Assistant		1		1		1		1
Secretary II	1		1		1		1	
<b>Total - Human Resources</b>	<b>4</b>	<b>1</b>	<b>4</b>	<b>1</b>	<b>4</b>	<b>1</b>	<b>3</b>	<b>1</b>
<b>Total - Executive Administration</b>	<b>25.5</b>	<b>10</b>	<b>25.5</b>	<b>10</b>	<b>22.5</b>	<b>10</b>	<b>21.5</b>	<b>8</b>



2010/11  
Budget

PERSONNEL SUMMARY

Positions	Approved 2007/08		Approved 2008/09		Approved 2009/10		Requested 2010/11	
	Full-Time	Part-Time	Full-Time	Part-Time	Full-Time	Part-Time	Full-Time	Part-Time
<b>• Building Inspection</b>								
Director of Building and Zoning	1		1		1		1	
Account Clerk I	5		5		3		0	
Building Inspector	2		2		2		1	
Electrical Inspector	2		2		1		1	
Housing and Zoning Inspector	2		2		2		0	
Housing and Zoning Inspector		2		2		2		0
HVAC Inspector	2		2		2		1	
Inspector Supervisor	2		2		2		0	
Plan Analyst	1		1		1		0	
Plan Examiner/Coordinator	1		1		0		0	
Plumbing Inspector	2		2		2		1	
Secretary II	1		1		1		1	
<b>Total - Building Inspection</b>	<b>21</b>	<b>2</b>	<b>21</b>	<b>2</b>	<b>17</b>	<b>2</b>	<b>6</b>	<b>0</b>

**• Engineering**

	Full-Time	Part-Time	Full-Time	Part-Time	Full-Time	Part-Time	Full-Time	Part-Time
City Engineer	1		1		1		1	
Deputy City Engineer	2		2		1		1	
Civil Engineer	3		3		2		2	
Clerk/Typist		1		1		1		1
Engineering Assistant	1		1		1		0	
Engineering Intern		3		3		2		0
Engineering Specialist	6		6		5		4	
Engineering Technician	1		1		0		0	
Environmental Specialist	1		1		1		0	
GIS Data Analyst	1		1		1		1	
Inspector	1		1		0		0	



2010/11  
Budget

PERSONNEL SUMMARY

Positions	Approved 2007/08		Approved 2008/09		Approved 2009/10		Requested 2010/11	
	Full-Time	Part-Time	Full-Time	Part-Time	Full-Time	Part-Time	Full-Time	Part-Time
<i>• Engineering, continued</i>								
Inspector Supervisor	1		1		1		1	
Land Surveyor	1		1		1		1	
Project Manager	1		0		0		0	
Secretary	1		1		1		1	
Sr. Right-of-Way Representative							1	
Sr. Traffic Technician		1		1		1		1
Survey Supervisor	1		1		1		0	
Traffic Technician		1		1		1		1
<b>Total - Engineering</b>	<b>22</b>	<b>6</b>	<b>21</b>	<b>6</b>	<b>16</b>	<b>5</b>	<b>13</b>	<b>3</b>

**FINANCE**

<i>• Accounting/Risk Mgmt.</i>								
Financial Services Director	1		1		1		1	
Account Clerk I	1.5		1.5		1.5		1	
Account Clerk II	1		1		1		1	
Accountant	5		5		4		3	
Insurance Safety Coordinator	1		1		1		0	
Risk Manager	1		1		1		1	
<b>Total - Accounting/Risk Mgmt.</b>	<b>10.5</b>	<b>0</b>	<b>10.5</b>	<b>0</b>	<b>9.5</b>	<b>0</b>	<b>7</b>	<b>0</b>

<i>• City Assessor's Office</i>								
City Assessor	1		1		1		1	
Deputy City Assessor	1		1		1		1	
Account Clerk II	0		0		2		2	
Appraiser	4		4		4		2	
Appraiser [Part-Time]		1		1		1		1
Office Assistant II	0		2		0		0	
Clerk/Typist	2		0		0		0	
Clerk Typist [Part-Time]		1		1		0		0
<b>Total - City Assessor's Office</b>	<b>8</b>	<b>2</b>	<b>8</b>	<b>2</b>	<b>8</b>	<b>1</b>	<b>6</b>	<b>1</b>



2010/11  
Budget

PERSONNEL SUMMARY

FINANCE , CONTINUED

Positions	Approved 2007/08		Approved 2008/09		Approved 2009/10		Requested 2010/11	
	Full-Time	Part-Time	Full-Time	Part-Time	Full-Time	Part-Time	Full-Time	Part-Time
<b>• Purchasing</b>								
Purchasing Director	1		1		1		1	
Associate Buyer	1		1		1		1	
Buyer	1		1		1		1	
Clerk/Typist		1		1		0		0
Office Assistant		0		0		1		1
<b>Total - Purchasing</b>	<b>3</b>	<b>1</b>	<b>3</b>	<b>1</b>	<b>3</b>	<b>1</b>	<b>3</b>	<b>1</b>
<b>• City Treasurer's Office</b>								
City Treasurer	1		1		1		1	
Account Clerk I	0.5		0.5		0.5		1	
Account Clerk II	3		2		2		2	
<b>Total - City Treasurer's Office</b>	<b>4.5</b>	<b>0</b>	<b>3.5</b>	<b>0</b>	<b>3.5</b>	<b>0</b>	<b>4</b>	<b>0</b>
<b>Total - Finance</b>	<b>26</b>	<b>3</b>	<b>25</b>	<b>3</b>	<b>24</b>	<b>2</b>	<b>20</b>	<b>2</b>



2010/11  
Budget

PERSONNEL SUMMARY

FIRE DEPARTMENT

Positions	Approved 2007/08		Approved 2008/09		Approved 2009/10		Requested 2010/11	
	Full-Time	Part-Time	Full-Time	Part-Time	Full-Time	Part-Time	Full-Time	Part-Time
• <i>Fire</i>								
Fire Chief	1		1		1		1	
Division Assistant Chief	2		2		2		2	
Clerk/Typist		1		1		0		0
Fire Staff Assistant		1		1		1		1
Fire Staff Lieutenant	7		7		6		6	
Fire Staff Technician	3		2		3		2	
Office Assistant		0		0		1		1
Secretary	1		1		1		1	
<b>Total - Fire</b>	<b>14</b>	<b>2</b>	<b>13</b>	<b>2</b>	<b>13</b>	<b>2</b>	<b>12</b>	<b>2</b>



2010/11  
Budget

PERSONNEL SUMMARY

Positions	Approved 2007/08		Approved 2008/09		Approved 2009/10		Requested 2010/11	
	Full-Time	Part-Time	Full-Time	Part-Time	Full-Time	Part-Time	Full-Time	Part-Time
<b>• Museum</b>								
Museum Manager	1		1		1		1	
Archivist	1		1		1		0	
Museum Aide		9		9		9		1
<b>Total - Museum</b>	<b>2</b>	<b>9</b>	<b>2</b>	<b>9</b>	<b>2</b>	<b>9</b>	<b>1</b>	<b>1</b>
<b>• Library</b>								
Library Director	1		1		1		1	
Assistant Director	2		0		0		0	
Administrative Aide	2		2		2		2	
Circulation Supervisor	0		1		1		1	
Office Assistant		1		1		1		1
Librarian		11		11		12		11
Librarian I	9		8		7		1	
Librarian II	2		4		4		1	
Library Aide		19		19		25		20
Library Assistant		43		42		32		18
Library Systems Specialist								1
Page		24		23		23		13
<b>Total - Library</b>	<b>16</b>	<b>98</b>	<b>16</b>	<b>96</b>	<b>15</b>	<b>93</b>	<b>6</b>	<b>64</b>
<b>Total Library/Museum</b>	<b>18</b>	<b>107</b>	<b>18</b>	<b>105</b>	<b>17</b>	<b>102</b>	<b>7</b>	<b>65</b>



2010/11  
Budget

PERSONNEL SUMMARY

Positions	Approved 2007/08		Approved 2008/09		Approved 2009/10		Requested 2010/11	
	Full-Time	Part-Time	Full-Time	Part-Time	Full-Time	Part-Time	Full-Time	Part-Time
<b>• Building Operations</b>								
Director of Building Operations	1		1		1		1	
Superintendent	1		1		0		0	
Building Maintenance Helper		1		1		1		1
Building Maintenance Specialist	9		9		9		8	
Clerk/Typist		1		1		0		0
Office Assistant		0		0		1		0
Secretary	1		1		1		1	
<b>Total - Building Operations</b>	<b>12</b>	<b>2</b>	<b>12</b>	<b>2</b>	<b>11</b>	<b>2</b>	<b>10</b>	<b>1</b>

**OTHER GENERAL GOVERNMENT**

<b>• Planning</b>								
Planning Director	1		1		1		1	
Housing and Zoning Inspector							2	2
Planner	2		2		0		0	
Principal Planner	1		1		1		0	
Secretary	1		1		1		1	
Zoning & Compliance Specialist							1	
<b>Total - Planning</b>	<b>5</b>	<b>0</b>	<b>5</b>	<b>0</b>	<b>3</b>	<b>0</b>	<b>5</b>	<b>2</b>

<b>• Real Estate &amp; Development</b>								
Assistant City Manager/ Economic Development Services	0.5		0.5		0.5		0	
Real Estate & Dev. Director	0		0		0		0	
Economic Development Specialist	1		1		1		0	
Right of Way Specialist 1	1		0		0		0	
Secretary	1		1		1		0	
Sr. Right of Way Representative	0		1		1		0	
<b>Total - Real Estate &amp; Development</b>	<b>3.5</b>	<b>0</b>	<b>3.5</b>	<b>0</b>	<b>3.5</b>	<b>0</b>	<b>0</b>	<b>0</b>
<b>Total - Other General Government</b>	<b>20.5</b>	<b>2</b>	<b>20.5</b>	<b>2</b>	<b>17.5</b>	<b>2</b>	<b>15</b>	<b>3</b>



2010/11  
Budget

PERSONNEL SUMMARY

POLICE DEPARTMENT

Positions	Approved 2007/08		Approved 2008/09		Approved 2009/10		Requested 2010/11	
	Full- Time	Part- Time	Full- Time	Part- Time	Full- Time	Part- Time	Full- Time	Part- Time
• <i>Police</i>								
Chief of Police	1		1		1		1	
Deputy Chief	1		1		1		0	
Captain	3		3		3		3	
Administrative Aide	1		1		1		1	
Analyst Planner							1	
Analyst Programmer	1		1		1		1	
Animal Control Officer	1		1		1		1	
Background Investigator		2		2		2		2
Communications Manager	1		1		1		1	
Communications Supervisor	8		8		8		8	
Community Affairs Director							0.5	
Crossing Guard		12		12		12		12
Desk Attendant								5
Intern		1		1		1		1
Investigations		2		2		2		2
Lieutenant	9		9		7		7	
Office Coordinator	1		1		1		1	
Police Officer	99		99		99		94	
Police Records Supervisor	1		1		1		1	
Police Service Aide	32		32		32		30	2
Records Clerk	5		5		5		5	
Research & Tech. Administrator	1	1	1	1	1	1	1	1
Secretary II	4		4		4		4	
Secretary	1		1		1		1	
Sergeant	22		22		20		18	
<b>Total - Police</b>	<b>192</b>	<b>18</b>	<b>192</b>	<b>18</b>	<b>188</b>	<b>18</b>	<b>179.5</b>	<b>25</b>



2010/11  
Budget

PERSONNEL SUMMARY

Positions	Approved 2007/08		Approved 2008/09		Approved 2009/10		Requested 2010/11	
	Full- Time	Part- Time	Full- Time	Part- Time	Full- Time	Part- Time	Full- Time	Part- Time
• <i>Parks &amp; Recreation</i>								
Parks & Recreation Director	1		1		1		1	
Superintendent of Recreation	1		1		1		1	
Parks Superintendent	1		1		1		1	
Account Clerk II	1		1		1		1	
Aquatics Coordinator	1		1		1		1	
Assistant Naturalist	1		0		0		0	
Attendant		30		30		0		0
Clerk/Typist		3		3		0		0
Community Center Attendant		14		14		14		14
Community Center Manager	1		1		1		1	
Custodial Laborer		1		1		0		0
Field Supervisor	2		2		2		1	
Fitness/Gym Coordinator	1		1		1		0	
Instructor		15		15		18		14
Irrigation Specialist	1		1		1		0	
Laborer	6		6		6		6	
Landscape Analyst	1		1		1		0	
Leader	2		2		2		1	
Lifeguard		77		77		77		77
Naturalist	1		1		1		0	
Naturalist Aide		3		3		0		0
Nature Center Instructor		6		6		0		0
Nature Center Manager	1		1		1		1	
Office Assistant I	2		2		2		0	
Preschool Coordinator		1		1		1		1
Recreation Aide		0		0		30		30
Recreation Supervisor	5		5		5		4	
Seasonal Laborer		55		55		40		40
Secretary II	1		1		1		1	
Senior Coordinator		1		1		1		1
Tree Specialist	4		3		3		1	
<b>Total - Parks &amp; Recreation</b>	<b>34</b>	<b>206</b>	<b>32</b>	<b>206</b>	<b>32</b>	<b>181</b>	<b>21</b>	<b>177</b>



**PUBLIC WORKS**

Positions	Approved 2007/08		Approved 2008/09		Approved 2009/10		Requested 2010/11	
	Full-Time	Part-Time	Full-Time	Part-Time	Full-Time	Part-Time	Full-Time	Part-Time
<b>• Fleet Maintenance</b>								
Superintendent	1		1		1		1	
Field Supervisor	2		2		2		2	
Equipment Serviceman I "D"	4		4		4		4	
Inventory Assistant/Clerk	1		1		1		1	
Summer Laborer		2		2		2		2
Trade Specialist I "F"	6		6		6		6	
Trade Specialist II "G"	4		4		4		4	
<b>Total - Fleet Maintenance</b>	<b>18</b>	<b>2</b>	<b>18</b>	<b>2</b>	<b>18</b>	<b>2</b>	<b>18</b>	<b>2</b>
<b>• Streets &amp; Drains Division</b>								
Public Works Director	1		1		1		1	
Superintendent	1		1		1		1	
Account Clerk	0.5		0.5		0.5		0.3	
Administrative Aide	1		1		1		0	
Division Supervisor							1	
Equipment Operator I	14		14		11		11	
Equipment Operator II	8		8		8		8	
Field Supervisor	2		2		2		1	
Leader	3		3		3		2	
Project Construction Manager	1		1		1		1	
Seasonal Supervisor		2		2		2		2
Summer Laborer		15		15		15		15
Weed Enforcement Officer		1		1		1		1
<b>Total - Streets &amp; Drains Division</b>	<b>31.5</b>	<b>18</b>	<b>31.5</b>	<b>18</b>	<b>28.5</b>	<b>18</b>	<b>26.3</b>	<b>18</b>



**PUBLIC WORKS, CONTINUED**

Positions	Approved 2007/08		Approved 2008/09		Approved 2009/10		Requested 2010/11	
	Full-Time	Part-Time	Full-Time	Part-Time	Full-Time	Part-Time	Full-Time	Part-Time
<b>• Refuse &amp; Recycling</b>								
Solid Waste Coordinator	1		1		1		1	
Account Clerk	0.5		0.5		0.5		.3	
Recycling Center Attendant		1		1		1		1
<b>Total - Refuse &amp; Recycling</b>	<b>1.5</b>	<b>1</b>	<b>1.5</b>	<b>1</b>	<b>1.5</b>	<b>1</b>	<b>1.3</b>	<b>1</b>
<b>• Water &amp; Sewer Division</b>								
Superintendent	1		1		1		1	
Account Clerk							0.3	
Equipment Operator I	11		11		12		12	
Equipment Operator II	6		6		6		6	
Equipment Serviceman	7		7		7		7	
Field Supervisor	2		2		1		1	
Inspector	1		1		1		1	
Leader	3		3		3		3	
Office Assistant I	2	1	2	1	2	1	2	1
Office Coordinator	1		1		1		1	
Summer Laborer		6		6		6		6
<b>Total - Water &amp; Sewer Division</b>	<b>34</b>	<b>7</b>	<b>34</b>	<b>7</b>	<b>34</b>	<b>7</b>	<b>34.3</b>	<b>7</b>
<b>Total - Public Works</b>	<b>85</b>	<b>28</b>	<b>85</b>	<b>28</b>	<b>82</b>	<b>28</b>	<b>80</b>	<b>28</b>
<b>• Information Technology</b>								
Info. Tech. Director	1		1		1		1	
Applications Support Specialist	2		2		2	2	1	1
GIS Administrator	1		1		1		1	
Lead PC Specialist	1		1		1		1	
Network Administrator	1		1		1		1	
PC Specialist	2		2		2		2	
Programmer/Analyst	1		1		1		1	
<b>Total - Information Technology</b>	<b>9</b>	<b>0</b>	<b>9</b>	<b>0</b>	<b>9</b>	<b>2</b>	<b>8</b>	<b>1</b>



2010/11  
Budget

PERSONNEL SUMMARY

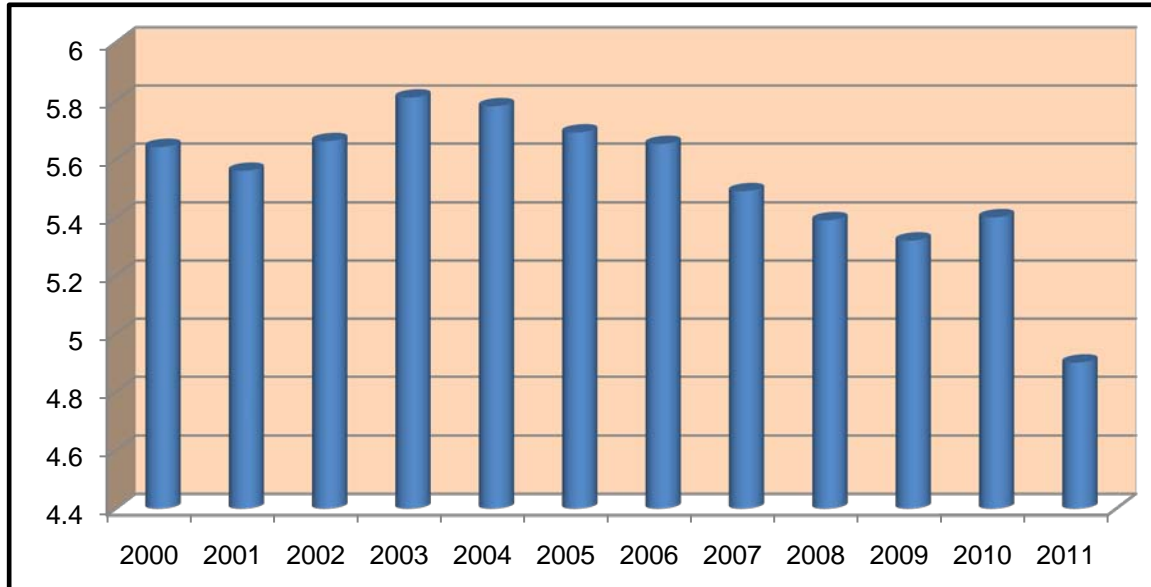
Positions	Approved 2007/08		Approved 2008/09		Approved 2009/10		Requested 2010/11	
	Full-Time	Part-Time	Full-Time	Part-Time	Full-Time	Part-Time	Full-Time	Part-Time
<b>• Golf Courses</b>								
Director of Golf Operations	1		1		1		1	
Assistant Pro Shop Manager		2		2		2		2
Cashier		10		10		10		8
Maintenance Specialist	3		3		3		3	
Starter Ranger		27		27		19		19
Summer Laborer		32		32		23		19
Superintendent of Greens	1		1		1		1	
<b>Total - Golf Courses</b>	<b>5</b>	<b>71</b>	<b>5</b>	<b>71</b>	<b>5</b>	<b>54</b>	<b>5</b>	<b>48</b>
<b>• Aquatic Center</b>								
Pool Manager		1		1		1		1
Assistant Manager		3		3		3		3
Support Staff		70		84		84		84
<b>Total - Aquatic Center</b>	<b>0</b>	<b>74</b>	<b>0</b>	<b>88</b>	<b>0</b>	<b>88</b>	<b>0</b>	<b>88</b>
<b>Total - All Personnel</b>	<b>472</b>	<b>529</b>	<b>467</b>	<b>543</b>	<b>443</b>	<b>496</b>	<b>388</b>	<b>450</b>



2010/11  
Budget

PERSONNEL SUMMARY

FULL-TIME EMPLOYEES PER 1,000 POPULATION



2010 and 2011 are based on the population estimate provide by the Southeast Michigan Council of Governments (SEMCOG).



City of  
**Troy**